



AVI PRECISION ENGINEERING PTE LTD

1, KALLANG SECTOR #04-03, SINGAPORE 349276. TEL: 65 67483866 FAX: 65 67484810

Email: avipre@avipre.com.sg

Company Reg No: 199300584 M

Website: <http://www.avipre.com>

Skype: avipre

UNICRAFT
ユニクラフト株式会社

Partners: Avytechno Indonesia,
Techlogic Thailand, Westek Malaysia,
Tritronics Philippines, Utama Australia



DESK SYSTEM



CONVEYOR SYSTEM



DESKTOP SYSTEM

What Sets UNICRAFT Systems Ahead:

TECHNOLOGY:

- Flatbed scanner-based systems
- High end graphics industry scanner with global hardware support
- High resolution color or B&W imaging
- NIST certified calibrated systems
- PC-based

MULTIPLE TYPES OF PRODUCTS:

- PCB reverse engineering
- PCB assembly programming
- EMI analysis tool
- Automated Optical Inspection tool (stencils, screens, dispensed material, printed material, balls, components, film, etc.)

FLEXIBLE SYSTEMS:

- Many applications on one system
- In-line or off-line configurations

LOW COST SYSTEMS:

- Excellent price/performance

EASY TO USE PROGRAMS:

- Golden board or CAD programming
- 80-20 rule

LARGE INSTALLED BASE:

- Over 900 systems installed in 39 countries

Dedicated to Supplying Inspection, Reverse Engineering, Programming and Design Products to the Electronics Industry...



AVI PRECISION ENGINEERING PTE LTD

1, KALLANG SECTOR #04-03, SINGAPORE 349276. TEL: 65 67483866 FAX: 65 67484810

Email: avipre@avipre.com.sg

Website: <http://www.avipre.com>

Company Reg No: 199300584 M

Skype: avipre

Inspection Systems



Automatic optical inspection (AOI) solutions to help improve quality, minimize rework, eliminate scrap and lower costs!

LTCC, MLCC, HTCC, Hybrid (ScanEYE API)

Adhesive, Epoxy, Paste (ScanEYE ADI)

Skip Marks (ScanEYE AMI)

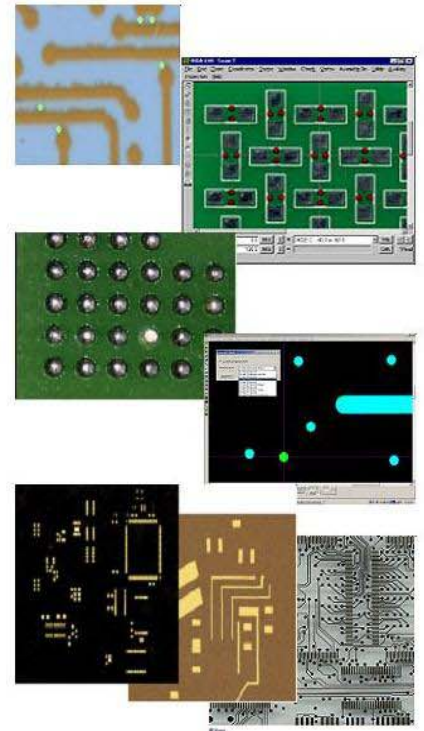
Ball Placement (ScanEYE BPI)

Solder Paste (ScanEYE SPI)

Stencil/Screen/ Film/Hole (MaskINSPECTOR)

(ScanEYE AFI)

(ScanEYE LDI)



ScanEYE AMI

ScanEYE ADI

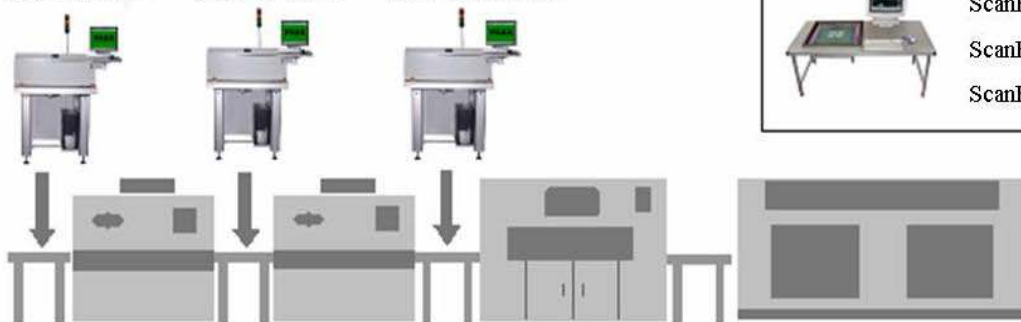
ScanEYE SPI/BPI

MaskINSPECTOR

ScanEYE API

ScanEYE AFI

ScanEYE LDI



Adhesive
Dispense

Screen
Printer

Component
Placement

Oven

Process Control System

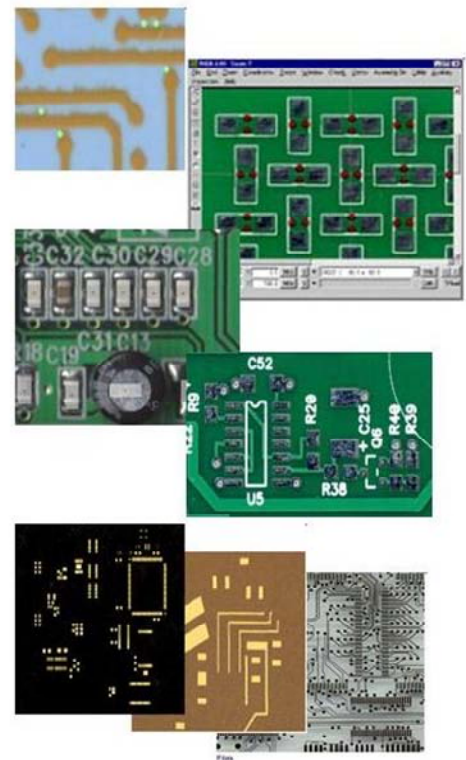


**Process Setup & Control Tool to catch problems before the production floor.
Inspect product at virtually every stage in the production process
....Eliminate Surprises!!!**

ScanEYE VPI

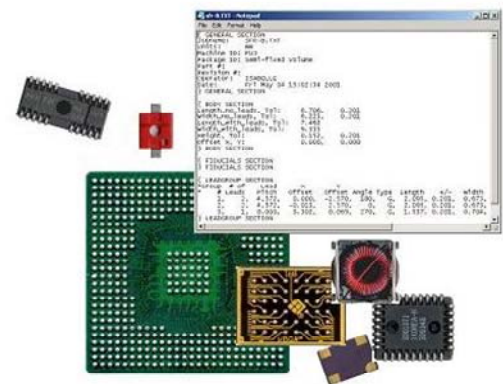
Process Setup & Control

- Inspect Bare Boards/Film/Artwork
- Inspect Stencils/Screens
- Inspect Boards with Paste or Adhesive
- Inspect Populated Boards
- Inspect Components
- Compare to either Gerber Data or Golden Part
- NIST certified calibrated scanner



Programming

- Scan Boards/Films/Stencils and Components
- Generate programs offline for assembly machines
- Generate component vision files



AVI PRECISION ENGINEERING PTE LTD

1, KALLANG SECTOR #04-03, SINGAPORE 349276. TEL: 65 67483866 FAX: 65 67484810

Email: avipre@avipre.com.sg

Company Reg No: 199300584 M

Website: <http://www.avipre.com>

Skype: avipre

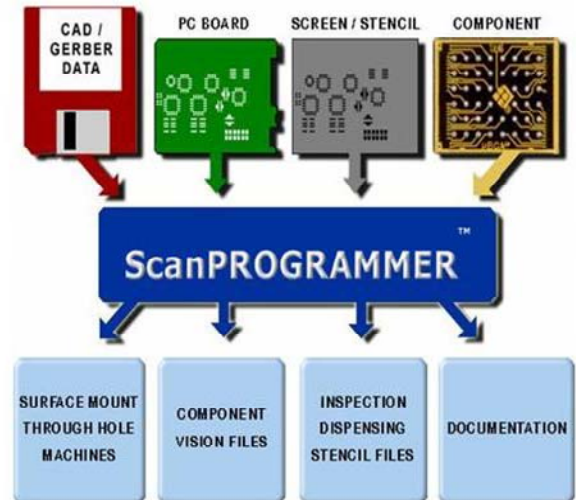
Programming Systems

*Off-line programming systems to generate SMT and through-hole assembly programs when no CAD or Gerber data exists. Over 70 output formats! Also generate component vision files for placement equipment...**No more calipers!!!***

ScanPROGRAMMER

Board Programming

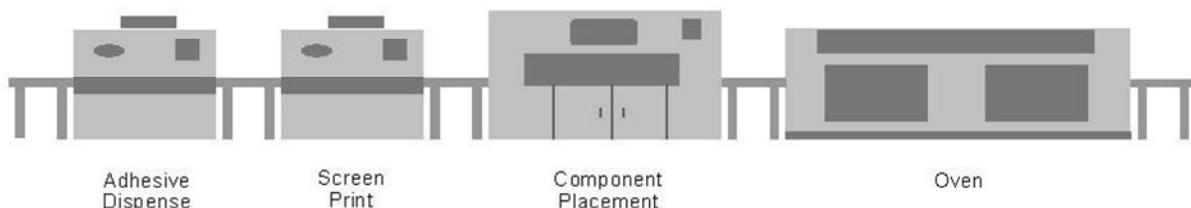
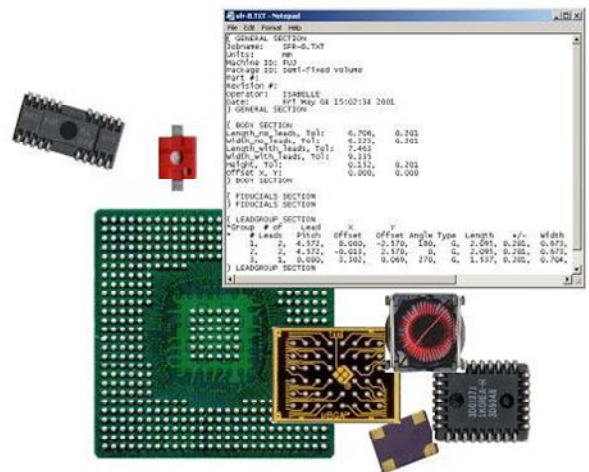
- Gerber and CAD Input/Output
- NIST certified calibrated scanner
- Scan Boards/Films/Stencils and Components
- Generate programs offline for assembly machines
- Generate component vision files



CompoBUILDER

Component Vision Files

- Scan Components/Trays/ Nozzles and Odd-Form Components
- NIST certified calibrated scanner
- Generate component vision files



AVI PRECISION ENGINEERING PTE LTD

1, KALLANG SECTOR #04-03, SINGAPORE 349276. TEL: 65 67483866 FAX: 65 67484810

Email: avipre@avipre.com.sg

Company Reg No: 199300584 M

Website: <http://www.avipre.com>

Skype: avipre

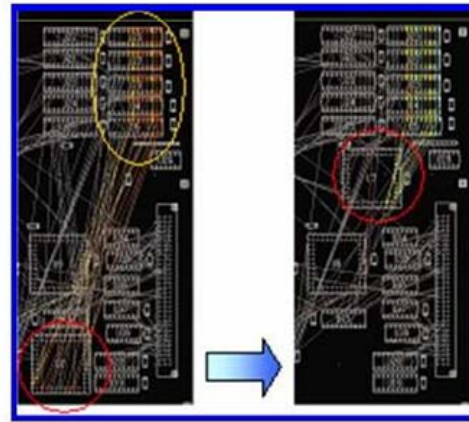
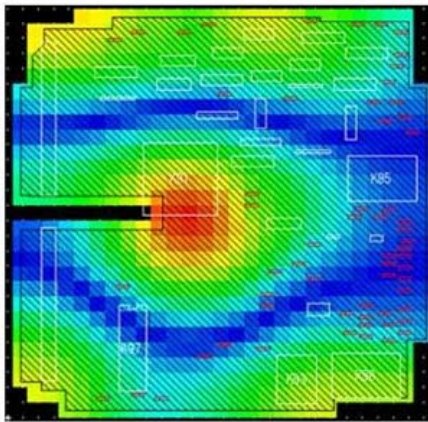
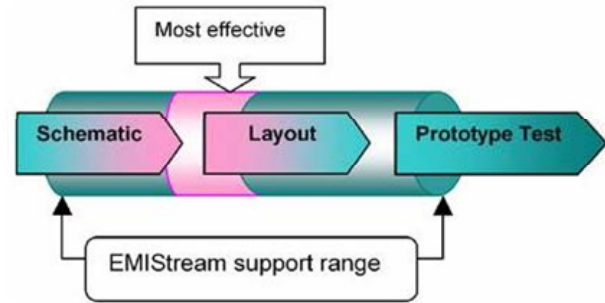
EMI Analysis Tool

UNICRAFT
ユニクラフト株式会社

Partners: Avytechno Indonesia,
Techlogic Thailand, Westek Malaysia,
Tritronics Philippines, Utama Australia

EMI Stream

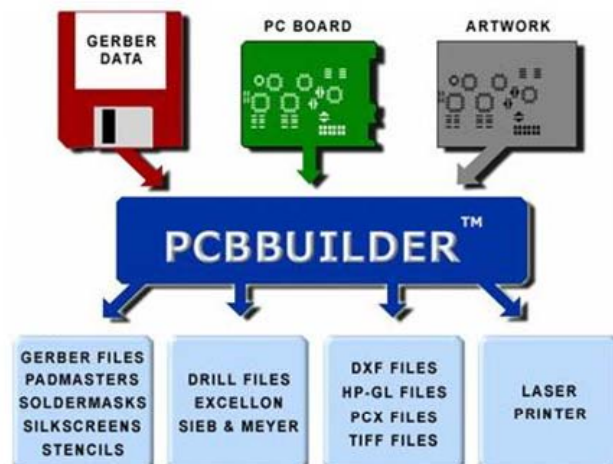
- An EMI Suppression Support Tool that permits PCB designers to use their existing CAD data to simulate emissions and make adjustments before expensive prototypes are built and tested, resulting in much faster time to market and lower product development costs.



PCB Reverse Engineering Systems

PCBBuilder

- Produce PCB fabrication Gerber and drill files from bare boards and/or artwork for PCB design and reverse engineering applications using NIST certified calibrated scanner.



MaskBUILDER

- Generates pads/drill files from bare boards and/or artwork in Gerber, Excellon and Sieb & Meyer formats



AVI PRECISION ENGINEERING PTE LTD

1, KALLANG SECTOR #04-03, SINGAPORE 349276. TEL: 65 67483866 FAX: 65 67484810

Email: avipre@avipre.com.sg

Company Reg No: 199300584 M

Website: <http://www.avipre.com>

Skype: avipre